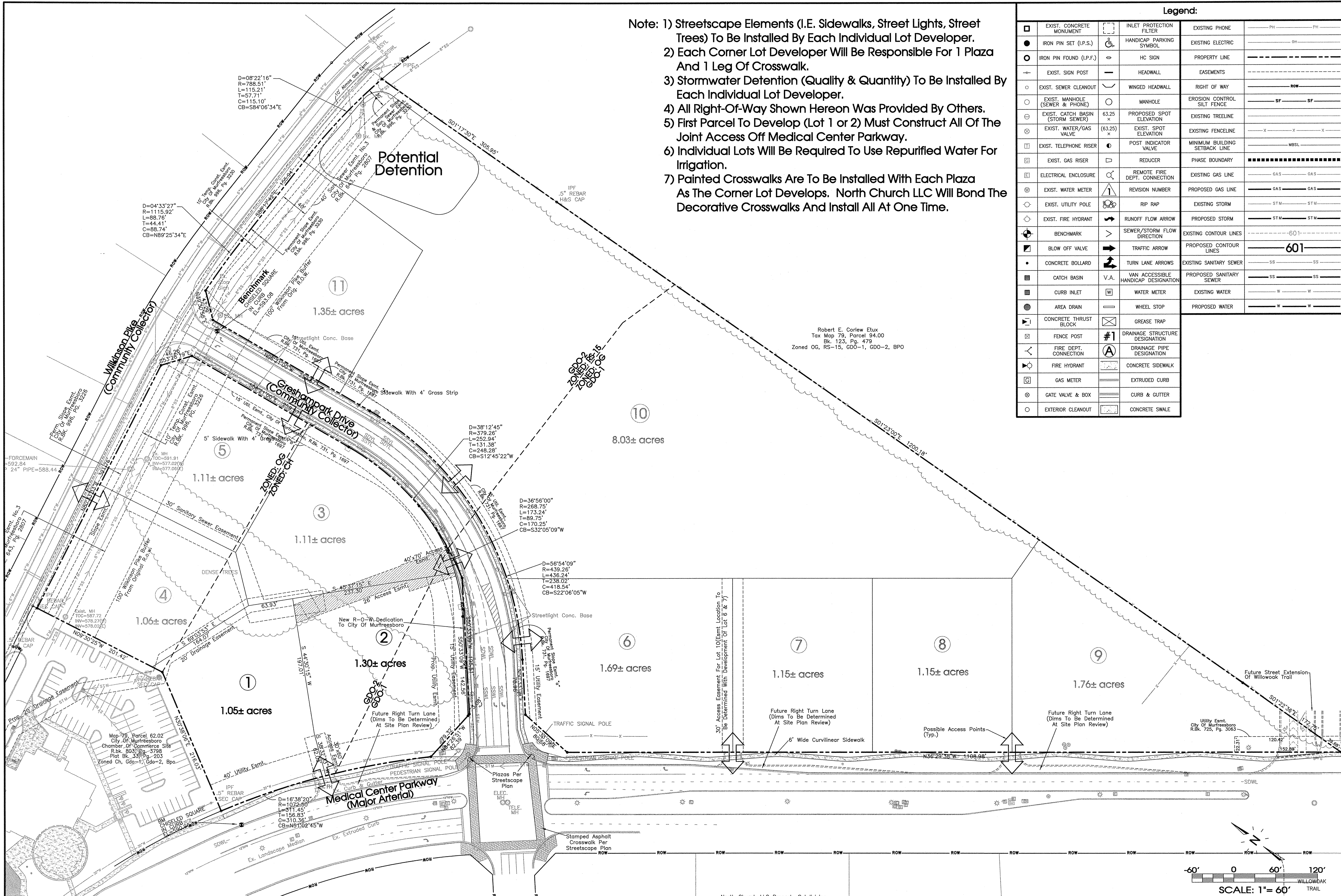


- Note: 1) Streetscape Elements (I.E. Sidewalks, Street Lights, Street Trees) To Be Installed By Each Individual Lot Developer.  
 2) Each Corner Lot Developer Will Be Responsible For 1 Plaza And 1 Leg Of Crosswalk.  
 3) Stormwater Detention (Quality & Quantity) To Be Installed By Each Individual Lot Developer.  
 4) All Right-Of-Way Shown Hereon Was Provided By Others.  
 5) First Parcel To Develop (Lot 1 or 2) Must Construct All Of The Joint Access Off Medical Center Parkway.  
 6) Individual Lots Will Be Required To Use Repurified Water For Irrigation.  
 7) Painted Crosswalks Are To Be Installed With Each Plaza As The Corner Lot Develops. North Church LLC Will Bond The Decorative Crosswalks And Install All At One Time.

Legend:			
□	EXIST. CONCRETE MONUMENT	□	INLET PROTECTION FILTER
●	IRON PIN SET (I.P.S.)	⊕	HANDICAP PARKING SYMBOL
○	IRON PIN FOUND (I.P.F.)	⊖	HC SIGN
→	EXIST. SIGN POST	—	HEADWALL
○	EXIST. SEWER CLEANOUT	—	WINGED HEADWALL
○	EXIST. MANHOLE (SEWER & PHONE)	○	MANHOLE
⊕	EXIST. CATCH BASIN (STORM SEWER)	63.25 x	PROPOSED SPOT ELEVATION
⊖	EXIST. WATER/GAS VALVE	(63.25) x	EXIST. SPOT ELEVATION
⊕	EXIST. TELEPHONE RISER	●	POST INDICATOR VALVE
⊖	EXIST. GAS RISER	▽	REDUCER
⊕	ELECTRICAL ENCLOSURE	⊕	REMOTE FIRE DEPT. CONNECTION
⊖	EXIST. WATER METER	⊕	REVISION NUMBER
○	EXIST. UTILITY POLE	⊕	RIP RAP
⊕	EXIST. FIRE HYDRANT	→	RUNOFF FLOW ARROW
⊕	BENCHMARK	>	SEWER/STORM FLOW DIRECTION
⊕	BLOW OFF VALVE	→	TRAFFIC ARROW
●	CONCRETE BOLLARD	↔	TURN LANE ARROWS
■	CATCH BASIN	V.A.	VAN ACCESSIBLE HANDICAP DESIGNATION
■	CURB INLET	W	WATER METER
■	AREA DRAIN	⊕	WHEEL STOP
■	CONCRETE THRUST BLOCK	⊕	GREASE TRAP
■	FENCE POST	#1	DRAINAGE STRUCTURE DESIGNATION
■	FIRE DEPT. CONNECTION	A	DRAINAGE PIPE DESIGNATION
■	FIRE HYDRANT	—	CONCRETE SIDEWALK
■	GAS METER	—	EXTRUDED CURB
■	GATE VALVE & BOX	—	CURB & GUTTER
○	EXTERIOR CLEANOUT	—	CONCRETE SWALE
—	EXISTING PHONE	—	EXISTING ELECTRIC
—	PROPERTY LINE	—	EASEMENTS
—	RIGHT OF WAY	—	EROSION CONTROL SILT FENCE
—	EXISTING TREELINE	—	EXISTING FENCELINE
—	MINIMUM BUILDING SETBACK LINE	—	PHASE BOUNDARY
—	EXISTING GAS LINE	—	PROPOSED GAS LINE
—	EXISTING STORM	—	PROPOSED STORM
—	EXISTING CONTOUR LINES	—	PROPOSED CONTOUR LINES
—	EXISTING SANITARY SEWER	—	PROPOSED SANITARY SEWER
—	EXISTING WATER	—	PROPOSED WATER



**SEC, Inc.**  
 ENGINEERING • SURVEYING • LAND PLANNING

**North Church LLC Subdivision  
 Section 4  
 Murfreesboro, Tennessee**

850 MIDDLE TENNESSEE BOULEVARD    MURFREESBORO, TENNESSEE 37129  
 PHONE: (615) 890-7901    E-MAIL: MTA101@SEC-CIVIL.COM    FAX: (615) 895-2567  
 NO PORTION OF THIS DRAWING MAY BE REPRODUCED WITHOUT THE EXPRESSED WRITTEN CONSENT OF S.E.C. INC.

DRAWN: SJA
DATE: 10-7-10
CHECKED: MAT, MPL
FILE NAME: 08144project.dwg
REVISED: 10-19-10
10-21-10
11-2-10
12-9-10
SCALE: 1" = 60'
JOB NO. 08144
SHEET: 2 of 7

Master Plan