

# ★ PHASE II - Murfreesboro Gateway



## Phase II History & Overview

Owned by North Church, LLC this phase is part of a tract that was purchased by the C.M. Gatton Trust. When developed, this phase will accommodate restaurants, banks and high-end apartments and offices as well as other retail.

This phase is part of the Murfreesboro Gateway and is located at the intersection of Robert Rose Drive and Medical Center Parkway. The property is east of The Avenue, a 950,000 square foot lifestyle mall. The Avenue opened in October 2007 and consists of 130 stores of ladies high-end fashion, sporting goods and restaurants as well as other retail.

The Embassy Suites Hotel, also part of the North Church, LLC Development, consists of 283 suites, a conference center of 80,000 square feet with supporting restaurant and lounge. Other parcels are in development for hospitality, banking and more.

All phases of the Murfreesboro Gateway are owned by C.M. Gatton Property and developed by Tommy Smith of StoneGate Properties.

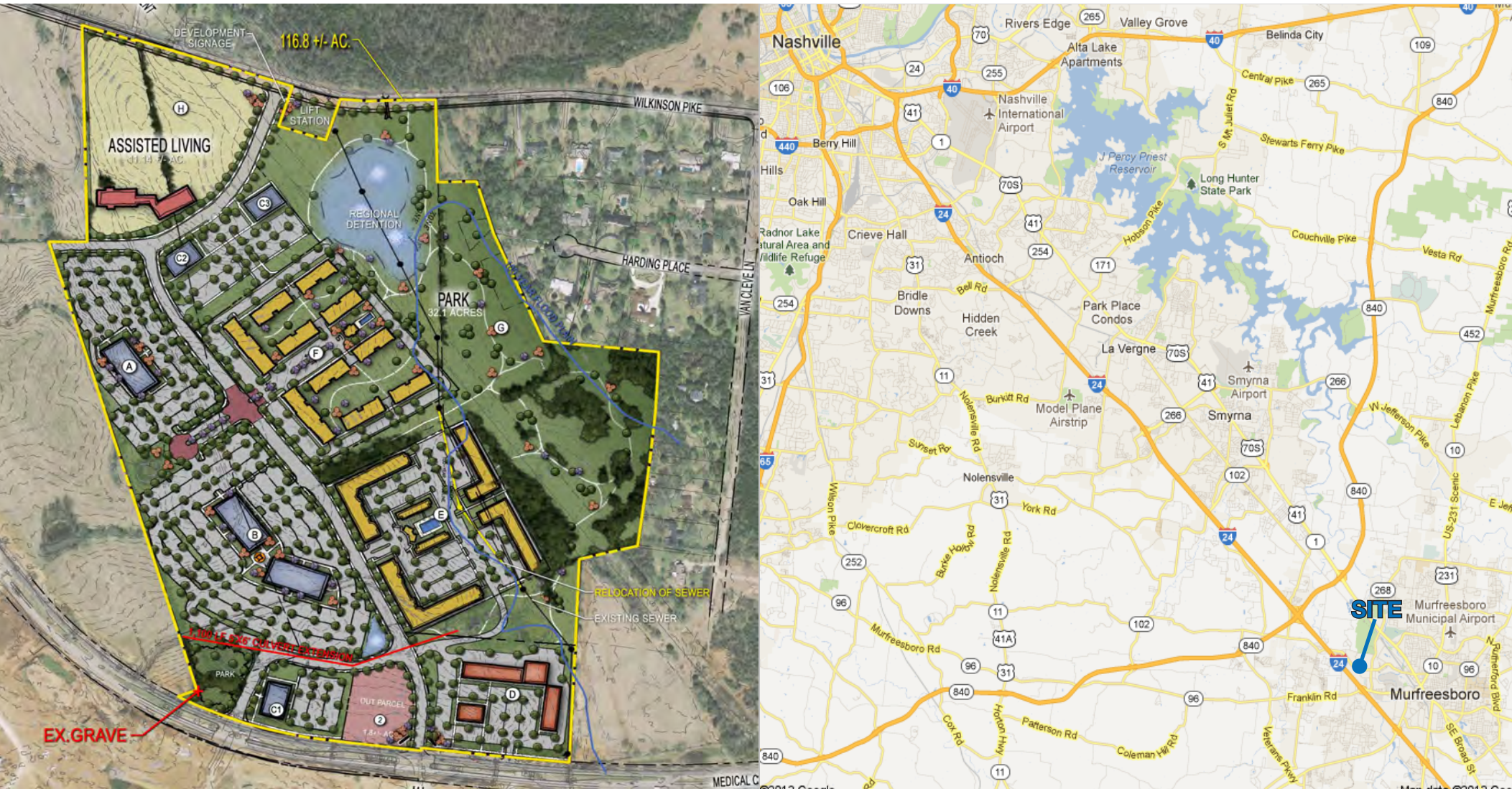
Tommy Smith  
615-893-8877  
tsmith@SGCDevelopment.com  
www.SGCDevelopment.com





# ★ PHASE II - Murfreesboro Gateway

The Gateway Has Established Murfreesboro as a Regional Destination for Shopping, Dining, Entertainment & Medical Services



Proposed Plan

Tommy Smith  
615-893-8877  
tsmith@SGCDevelopment.com  
www.SGCDevelopment.com

