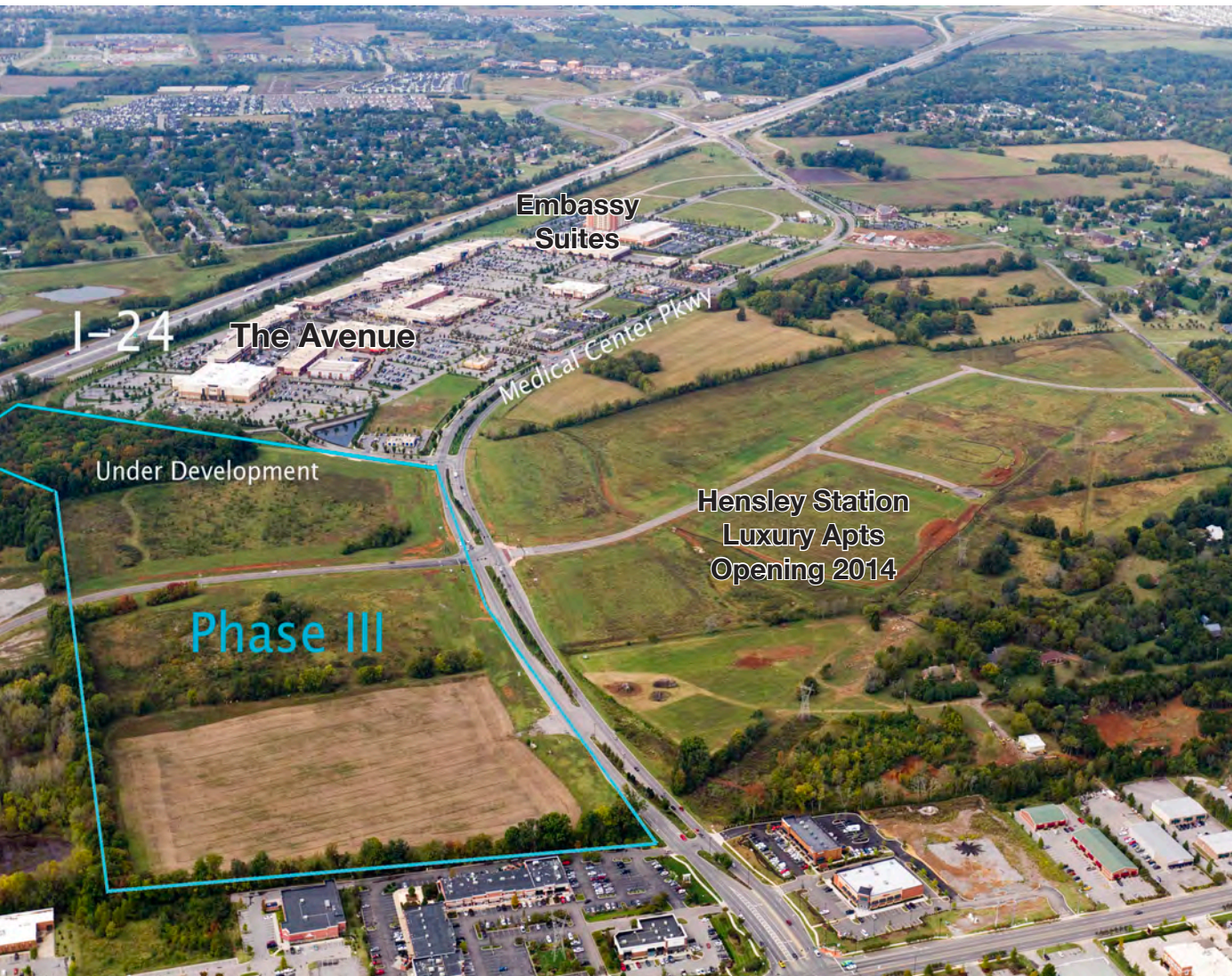


★ PHASE III - Murfreesboro Gateway



Phase III History & Overview

Owned by North Church, LLC this phase is part of a tract that was purchased by the C.M. Gatton Trust. When developed, this phase will accommodate apartments, restaurants, high end office and retail frontage.

This phase is part of the Murfreesboro Gateway and is located at the intersection of Robert Rose Drive and Medical Center Parkway. It is adjacent to The Avenue, a lifestyle mall of more than 130 retailers, and West of Phase II, future site for apartments, offices and hospitality.

With almost 73 total acres available in Phase III, this is an excellent location for mixed use and also offers some interstate visibility. This site is also walking distance to all phases of the Gateway in addition to several other commercial opportunities, including Middle TN Medical Center.

All phases of the Murfreesboro Gateway are owned by C.M. Gatton Property and developed by Tommy Smith of StoneGate Properties.

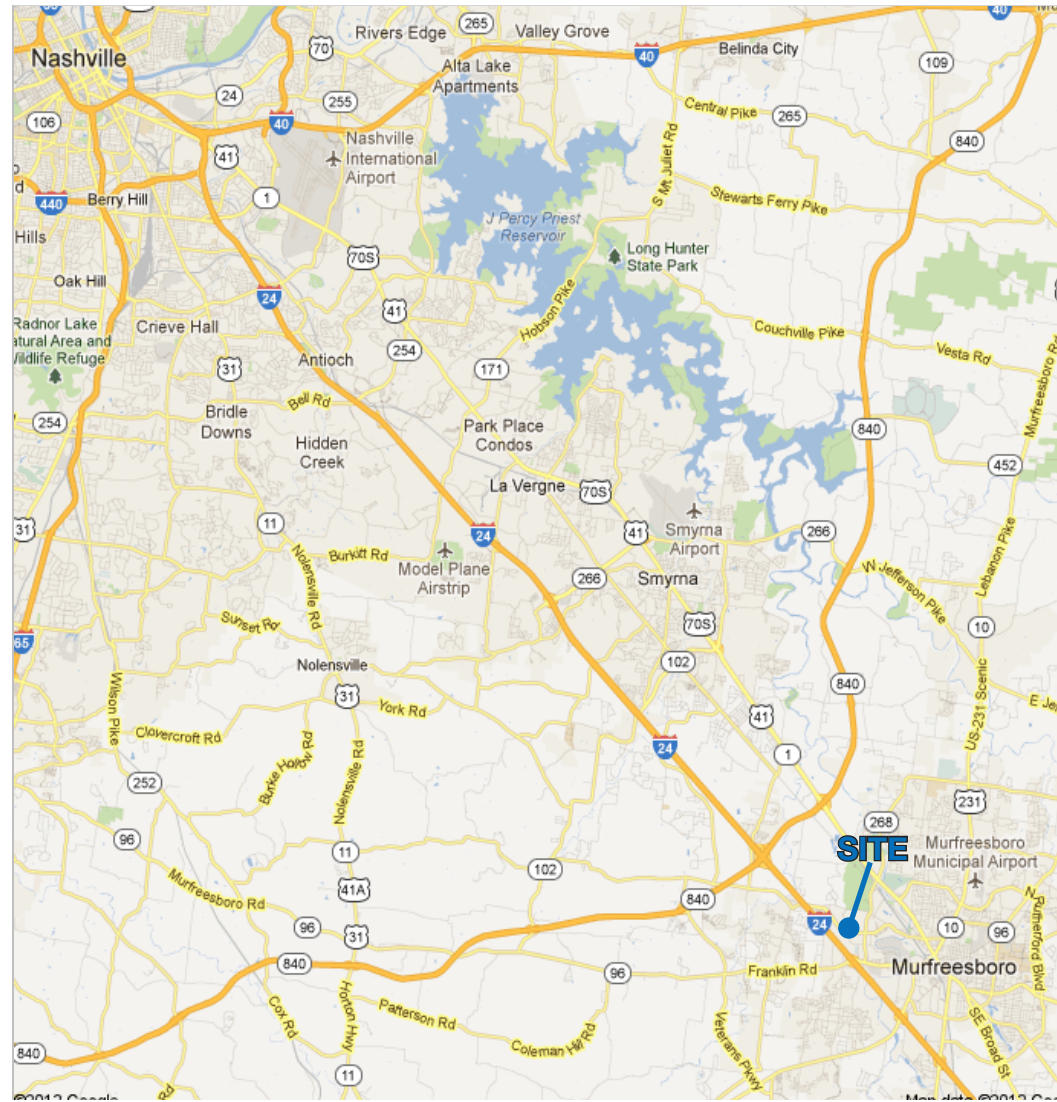
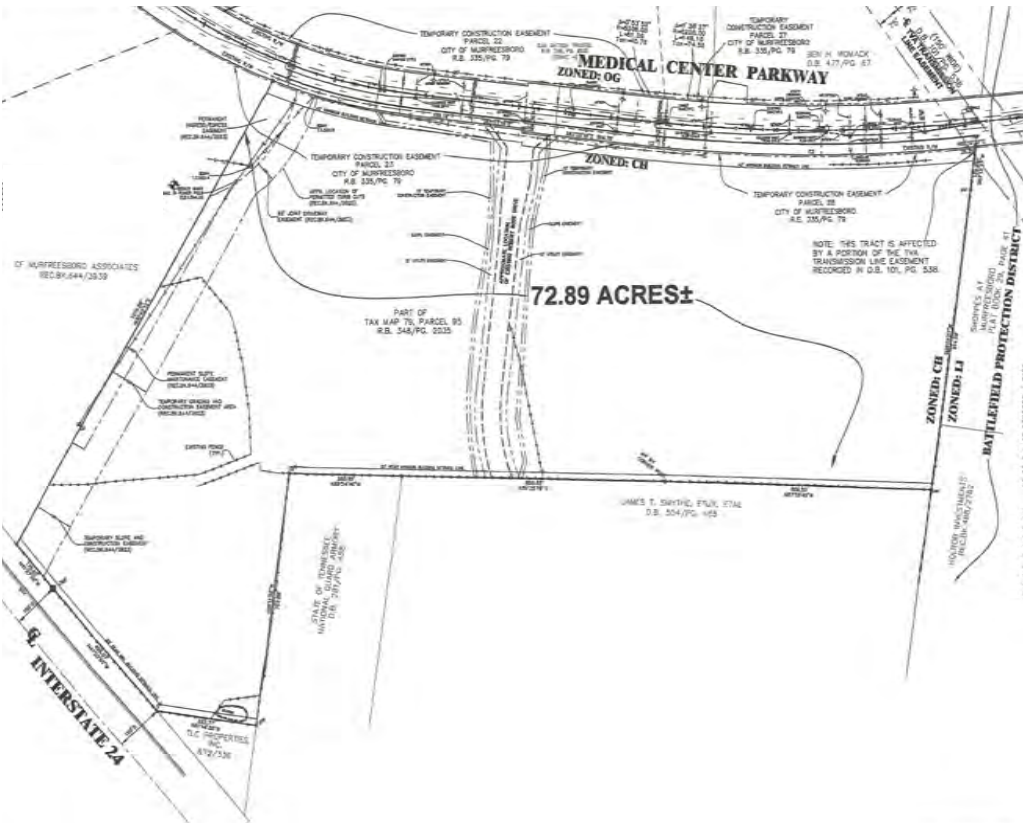
Tommy Smith
615-893-8877

tsmith@SGCDevelopment.com
www.SGCDevelopment.com



★ PHASE III - Murfreesboro Gateway

The Gateway Has Established Murfreesboro as a Regional Destination for Shopping, Dining, Entertainment & Medical Services



Tommy Smith
 615-893-8877
 tsmith@SGCDevelopment.com
 www.SGCDevelopment.com

